

Hilary Chan

PORTFOLIO



FINAL RENDER | CAMDEN'S STREET ART EPICENTRE

VIEW FROM SOUTH - NORTH TOWARD CHALK FARM ROAD STATION

The proposal is located immediately opposite Camden Lock Market, adjacent to the Regent Canal. Precisely at:

No. 1-4 Camden High Street,
Camden Town,
London, UK.

The specificity in its location, naturally brings in an audience while being convenient for its residents.

It provides 22 residential units serving one, two, or three inhabitants each, with a maximum capacity of 41 people. A single unit is dedicated to the resident street artist and the rest are targeted towards others who are absent from home for the majority of the day.

Communal social spaces: the gallery, cafe / bar and open spaces (private & public) will provide opportunities for congregation between different users, while generating funds for the programme.

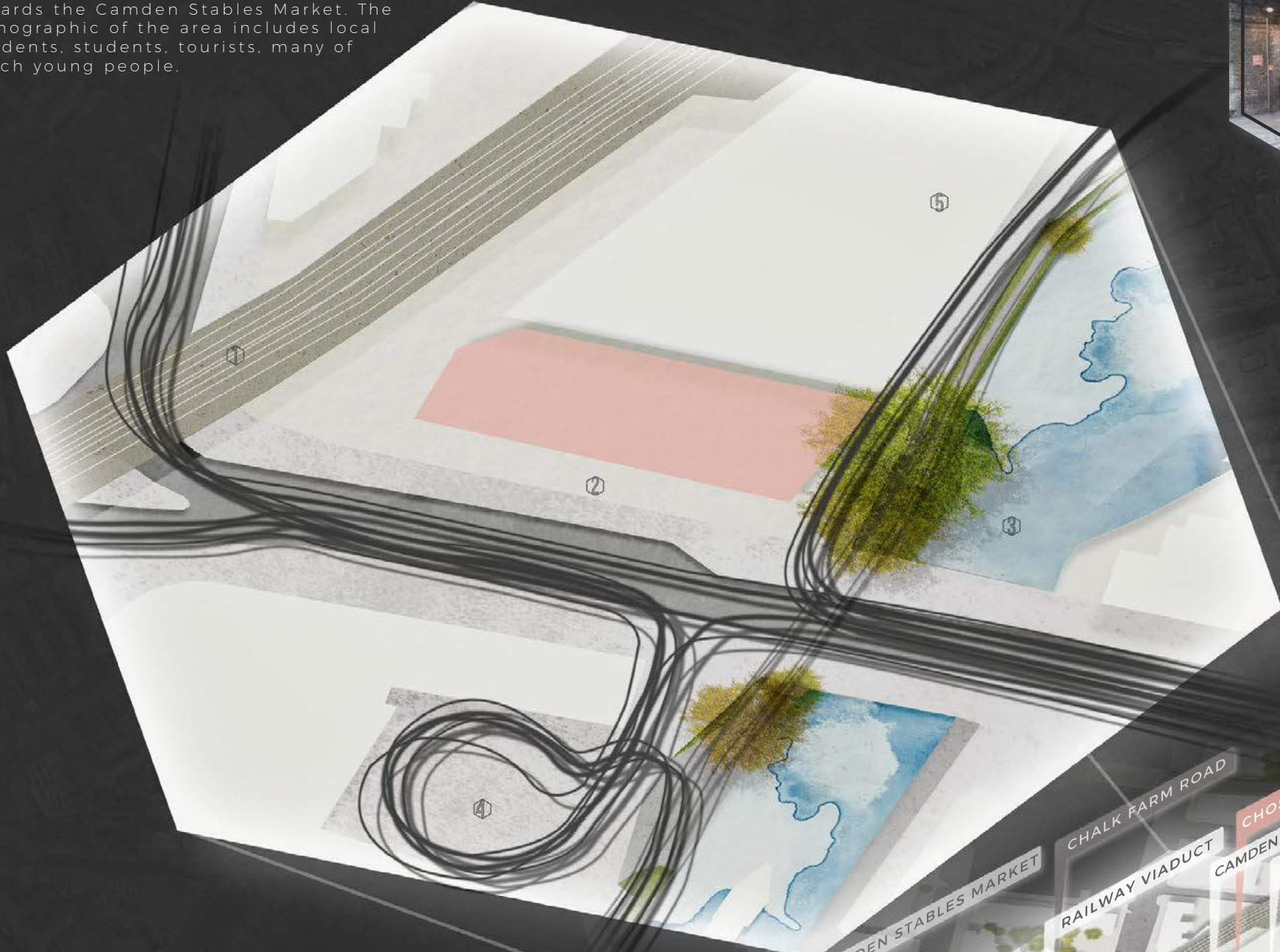
In collaboration with the Real Art of Street Art, street artists from all over the globe will be invited to live for a period of three months, during this time they will paint the facade of the structure as well as around Camden Town. The proposal will promote street art culture and will portray imagery mirroring present time, diversity, culture, the evolving character and the blossoming street art scene in the area. In addition, it will provide audiences and residents with vibrant and dynamic dwellings in combination with the various programmes and ever changing facade. It re-promotes the identity of the area and turning it into an epicentre for street art.



GENERAL & IMMEDIATE SITE CONTEXT
KEY BUILDINGS & CHARACTER OF CAMDEN TOWN

FLOW OF TRAFFIC

The general of people and traffic are highlighted on the adjacent map. The main flow of pedestrians move from south to north, towards the Camden Stables Market. The demographic of the area includes local residents, students, tourists, many of which young people.



CHOSEN SITE LOCATION

The site is located immediately north of Hampstead Road Bridge where Camden High Street and Chalk Farm Road converge. Regents Canal, Hawley Wharf and the Railway viaducts are immediately south-east, north-east and north-west of the site respectively. Hawley Wharf has yet to start construction. The block adjacent to the chosen site will likely be used for retail.

GENERAL CONTEXT

There are a mix of commercial, residential and mixed use spaces. Some of the key structures include, the famous market along the high street and Chalk Farm Road, pubs and music venues. These structures create vibrant day and night scenes in the area.



INTERACTION BETWEEN USERS & PROGRAMME
RENDERING OF INTERIOR VIEWS ON THE GROUND FLOOR



G/F CAFE



G/F PAINT STUDIO



G/F GALLERY



SHARED ROOFTOP



PAINTED EXTERIOR LOUVERS



BASEMENT BIKE STORAGE



1-3/F RESIDENTIAL UNITS



3/F SHARED CORRIDOR



3/F SHARED CORRIDOR

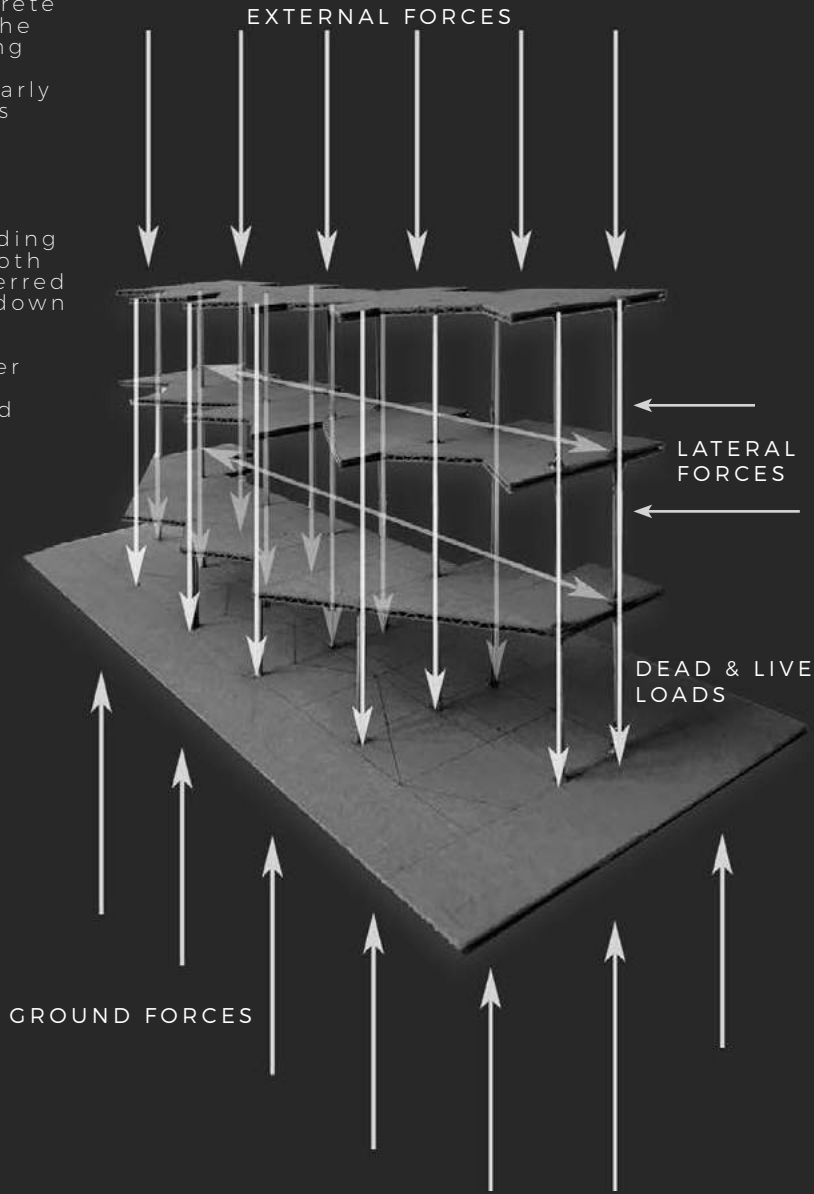
STRUCTURAL MEMBERS
COLUMNS, STAIR CORES & FORCES

LATERAL FORCES

400mm reinforced concrete walls running through the stair cores provide strong support against strong winds, which is particularly important because of its location.

FLAT SLAB

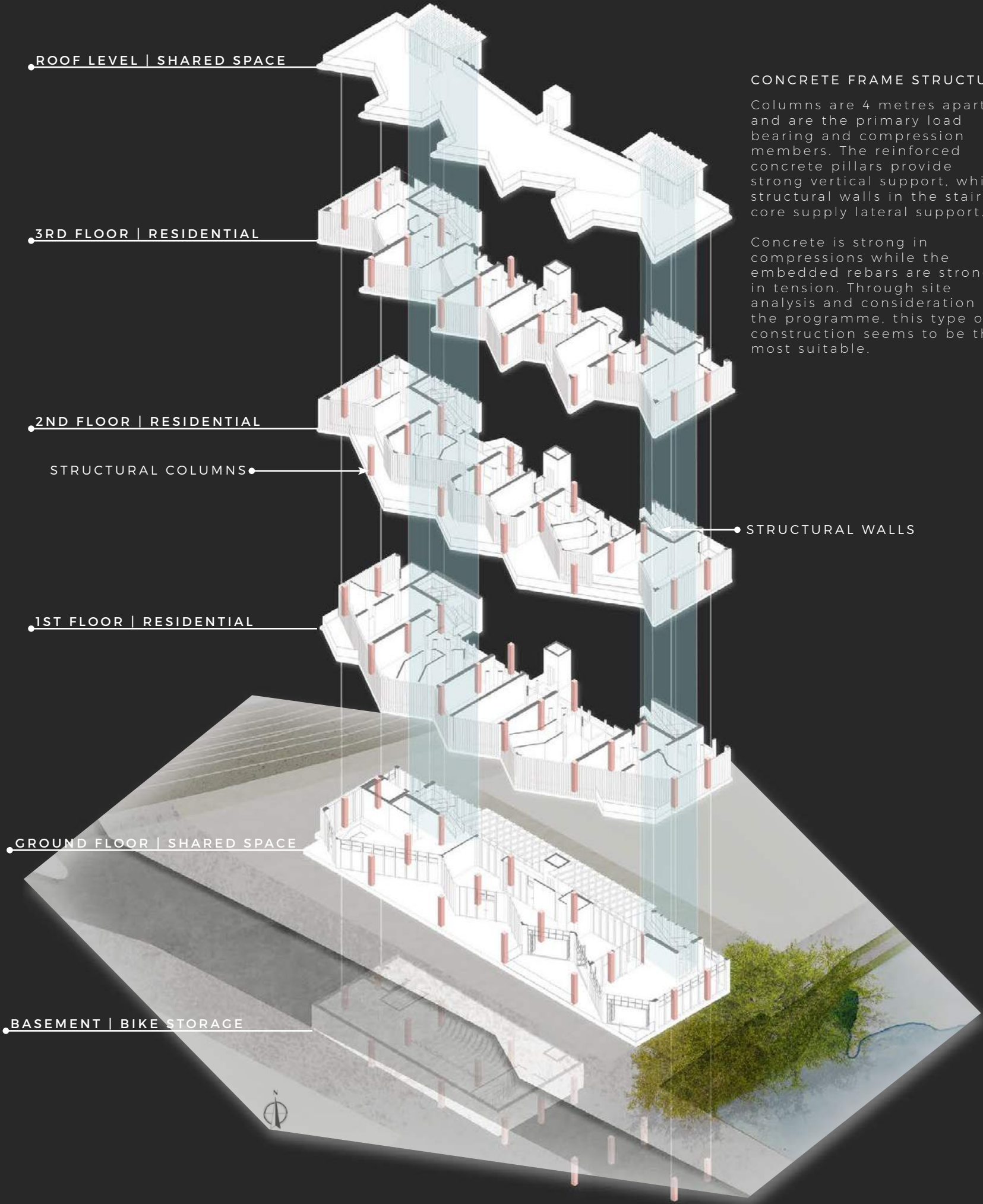
Shear reaction and bending moment is present at both ends. The load is transferred onto vertical supports, down towards the foundation where these loads are distributed across larger surface area, mitigating stresses on concentrated areas.



IBM BUILDING,
Wellington, New Zealand.

Concrete frame construction provides flexibility in the interior plan as well as facade. It strongly supports both, vertical and lateral forces. These V are beneficial to my proposal, since it has an unconventional facade.

The robust qualities of reinforced concrete proves to be a fantastic canvas for street art, which can be continually painted over.



CONCRETE FRAME STRUCTURE

Columns are 4 metres apart, and are the primary load bearing and compression members. The reinforced concrete pillars provide strong vertical support, while structural walls in the stair core supply lateral support.

Concrete is strong in compressions while the embedded rebars are strong in tension. Through site analysis and consideration of the programme, this type of construction seems to be the most suitable.

LOUVRE DETAIL, ENVIRONMENTAL STRATEGY & MATERIALITY
PLAN OF LOUVRE SYSTEM | IMPACT OF SOLAR, WIND, SOUND & PRECIPITATION

